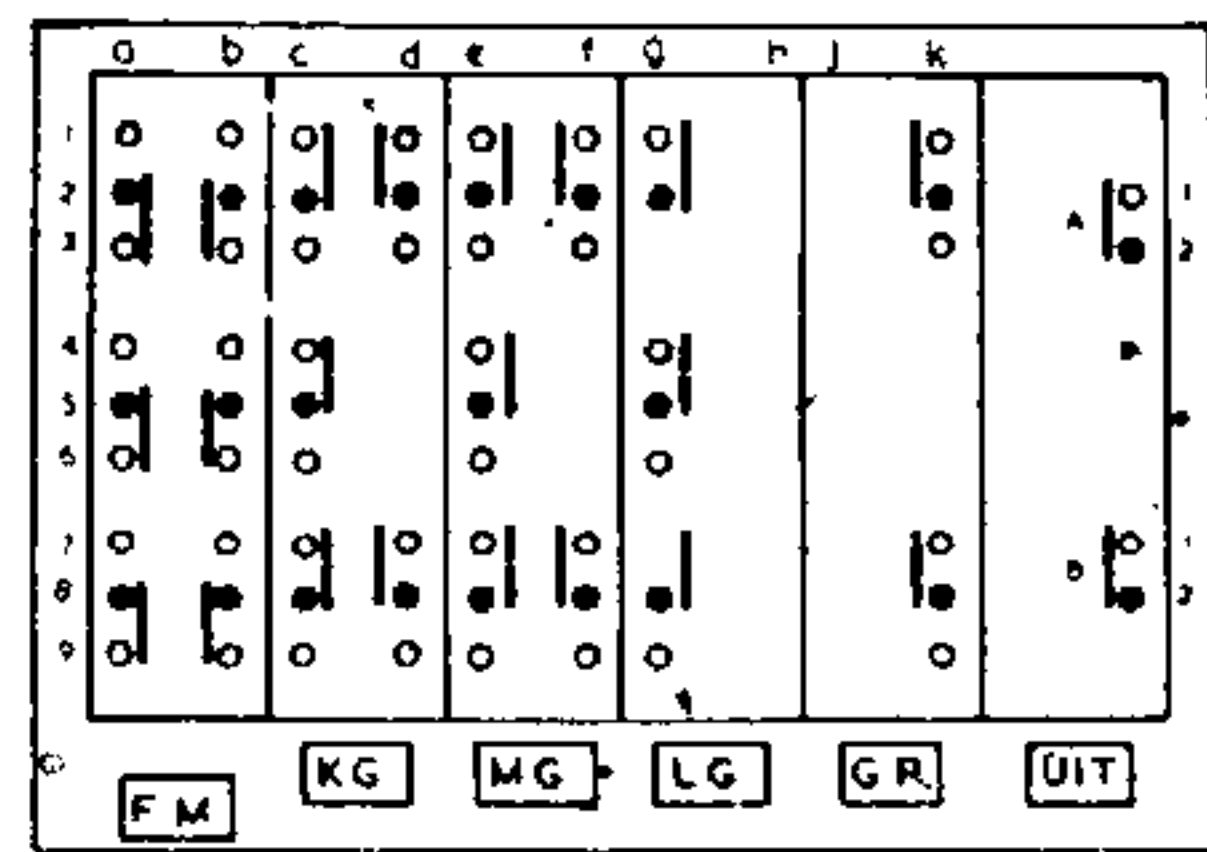
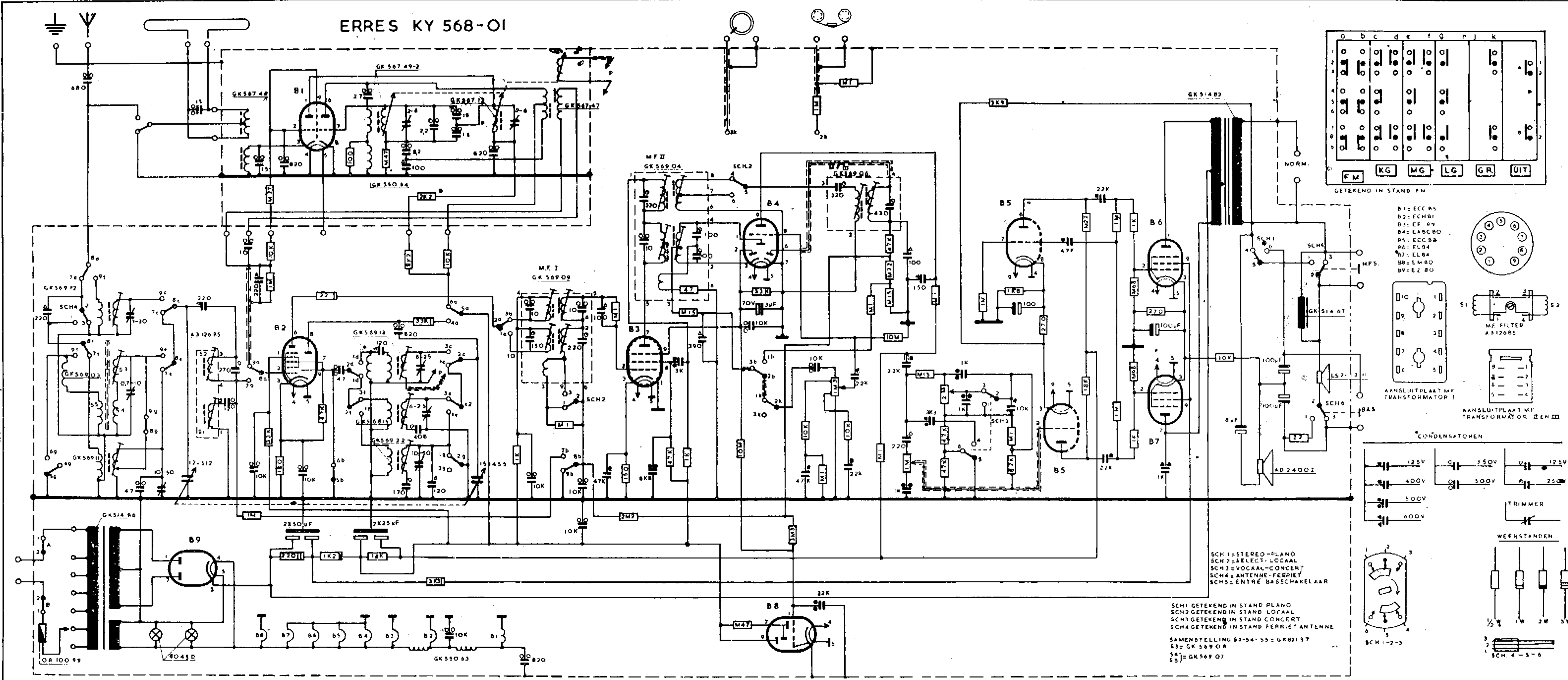
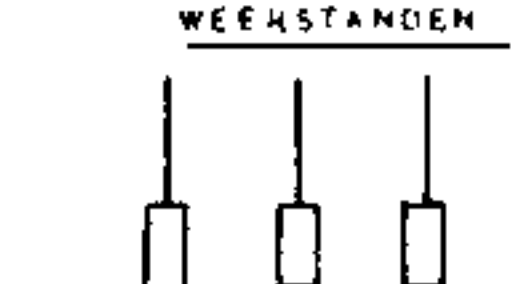
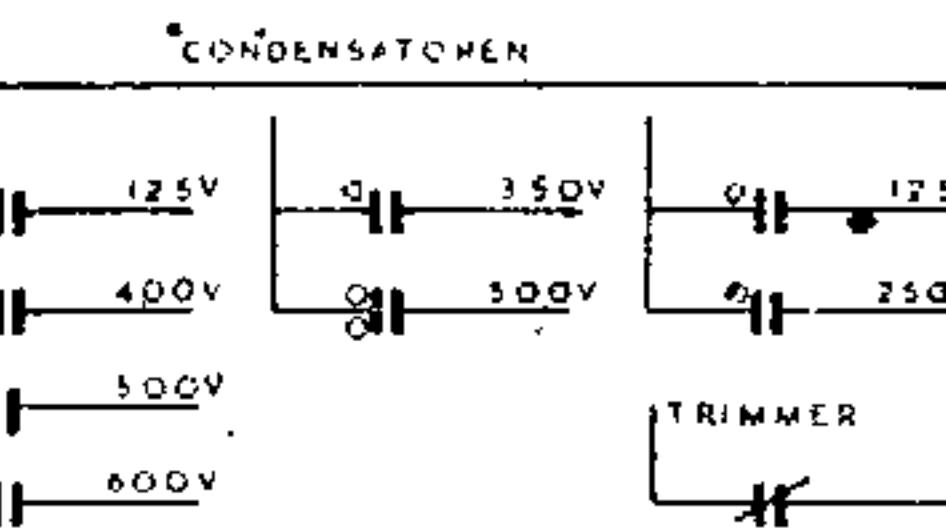
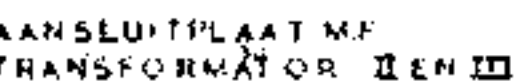
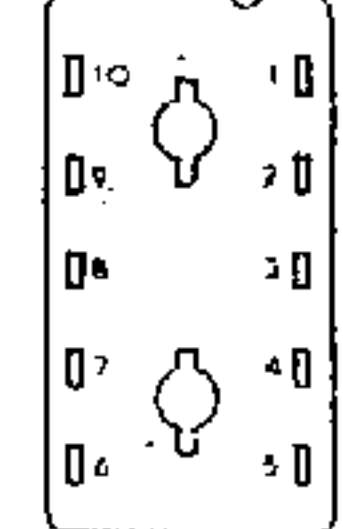
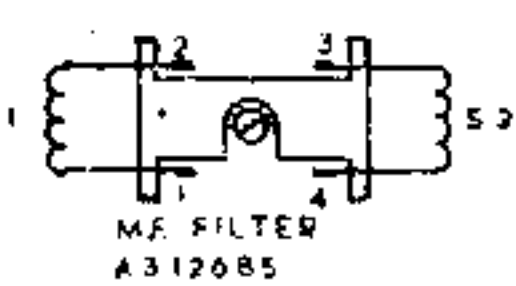
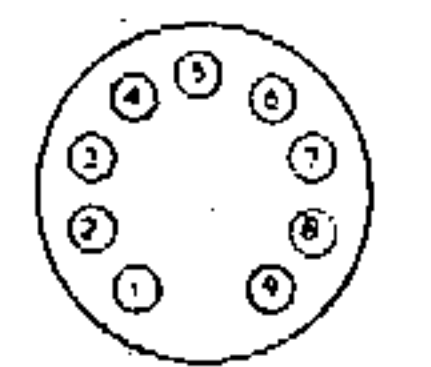


# ERRES KY 568-01



GETEKEND IN STAND FM

- B1 = ECC 85
- B2 = ECC 81
- B3 = EF 89
- B4 = EAC 80
- B5 = ECC 82
- B6 = ECC 82
- B7 = ECC 82
- B8 = ECC 82
- B9 = ECC 82



SCH 1 = STEREO-PLANO  
 SCH 2 = SELECT. LOCAAL  
 SCH 3 = VOCAAL-CONCERT  
 SCH 4 = ANTENNE-FERRIET  
 SCH 5 = ENTRÉ BASSCHAKELAAR

SCH 1 GETEKEND IN STAND PLANO  
 SCH 2 GETEKEND IN STAND LOCAAL  
 SCH 3 GETEKEND IN STAND CONCERT  
 SCH 4 GETEKEND IN STAND FERRIET ANTENNE

SAMENSTELLING 53-54-55 = GR 821 37  
 53 = GK 569 08  
 54 = GK 569 07

KY 568-01/16